

RAMJET **RJ-450** **4 Cubic Yard Capacity** **ON-SITE COMPACTOR**



Totally

Listed!

Marathon's **RamJet RJ-450** **Offers Best Value**

The RamJet **RJ-450** is excellent for distribution centers, warehouses, and general industrial use. The extra large 60" x 67 1/2" clear top opening accepts those large, bulky items with ease. Ruggedly built to meet the challenge, this unit packs a powerful 56,500 pounds of crushing force. And, the RJ-450 is built for performance and reliability as only Marathon, the solid waste industry's specialist in on-site compaction systems, can provide.

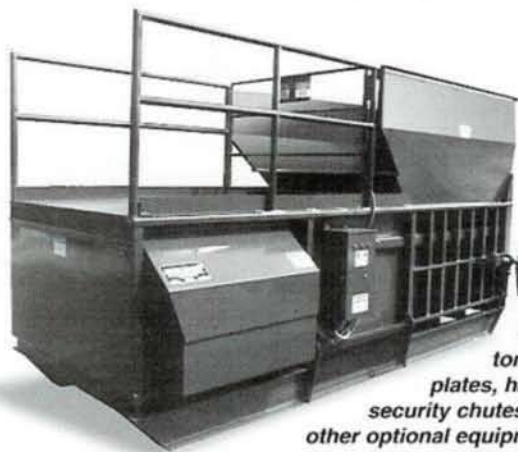
Industrial Grade Systems

The **RJ-450** features industrial grade electrical and hydraulic systems that are totally UL Listed! This means trouble free operation and top performance year after year. Marathon's side-mounted power unit combines the convenience and ease-of-maintenance that comes with a remote power pack with the space savings and ease-of-installation of an integrated power pack.

Ram Guide **System**



The packing ram is supported by specially formulated cast iron shoes which ride on replaceable wear strips. This exclusive design protects the charge box floor from the full force of the packing ram, extending its life and dramatically reducing compaction-robbing friction.



Compactors can be fitted with custom hoppers, tread plates, hand & toe rails, security chutes, cart dumpers and other optional equipment.

Specifications:

Charge Box Capacity		
[Mfrs. Rating].....	4.0 cy.....	3.06 m ³
[WASTEC Rating].....	2.95 cy.....	2.25 m ³
Clear Top Opening.....	67 1/2 L" X 60" W.....	1715mm x 1524mm

Performance Characteristics:

Cycle Time.....	50 s.....	50 s
Total Normal Force.....	48,100 lb.....	214 kN
Total Maximum Force.....	56,500 lb.....	251 kN
Normal Ram Face Pressure.....	23.9 psi.....	165 kPa
Maximum Ram Face Pressure.....	28.1 psi.....	194 kPa
Ram Penetration.....	13".....	330 mm

Electrical Equipment:

Electrical Motor 3/60-208/230/460...15 hp.....	11.1 kW
Electrical Control Voltage.....	120 VAC.....120 VAC
UL Labeled Panel Box: Type NEMA 3, All Circuits Fused	
Standard Controls: Keylock Start/ Mushroom Stop/Reverse	
Connected to 13' (3962mm) Sealtite	

Hydraulic Equipment:

Hydraulic Pump Capacity.....	18.5 gpm.....	70 L/min.
Normal Pressure.....	1700 psi.....	117 bar
Maximum Pressure.....	2000 psi.....	138 bar
Hydraulic Cylinder - Bore.....	6".....	152 mm
Hydraulic Cylinder - Rod.....	4".....	102 mm

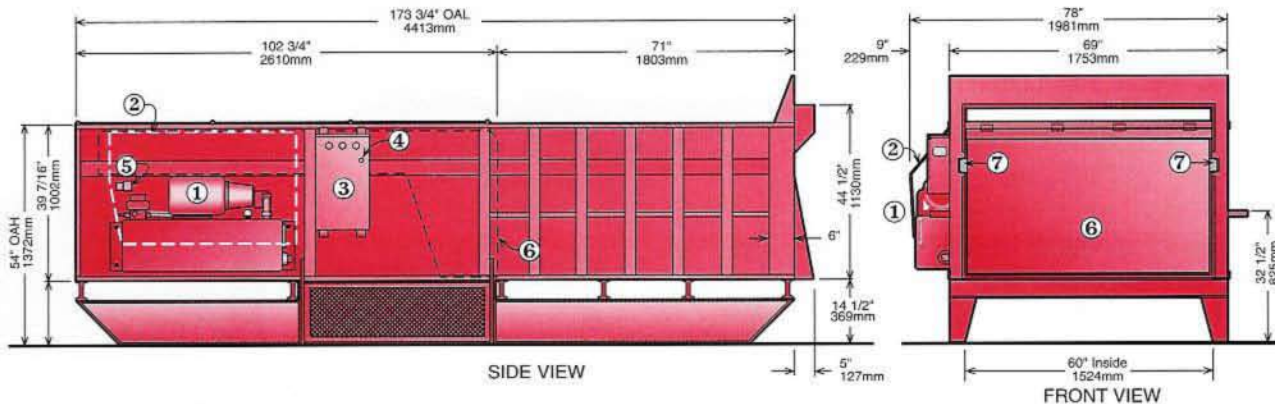
Weight.....8000 lbs.....3629 kg

RAMJET RJ-450



▼ The **Pump** on Marathon's high performance **Side-Mounted Power Unit** is secured to a "C" flange motor with a machined bracket that guarantees coupling alignment. The **Limit Switch** (arrow) and all other parts of the power unit are easily accessible for ease-of-maintenance. The **Reset Button** for the Motor Starter is also located on the outside which eliminates entry into the control box.

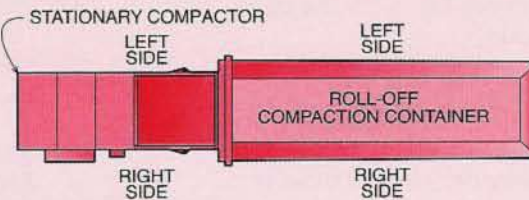
▼ The RJ-450 is totally UL listed! The controls are key-operated and fully automatic. The heavy duty push button controls are contained in a weatherproof NEMA 13 enclosure. Connected to the power pack with 13' of sealtite, the controls can be located for operator convenience.



- ① Side-Mount Power Unit
- ② Power Unit Weather Cover
- ③ Control Panel Box
- ④ Motor Starter Reset Button
- ⑤ Limit Switch
- ⑥ Ram
- ⑦ Ram Guide Shoes with Replaceable Wear Strips

Top View of Typical Compactor & Container Configuration

NOTE: Lefthand or Righthand is determined by facing the rear of the compactor (the end opposite the charge box).



Concrete Pad Requirements

6" (153mm) Thick Reinforced 3000 PSI Concrete, (4) 3/4" (20mm) Anchor Bolts (Min.)



1-800-464-3095

Pictures in this literature are illustrative only. Specifications are subject to change without notice in order to accommodate improvements to the equipment. Certified in compliance with ANSI Regulation Z245.2, all OSHA standards, and certified under WASTEC's Stationary Compactor Certification Program. Products must be used with safe practice and in accordance with said regulations and standards.



ENVIRONMENTAL INDUSTRY ASSOCIATION